

檔 號：

保存年限：

國立臺灣大學 函

機關地址：10617臺北市大安區羅斯福路4
段1號

聯絡人：彭宜翎

電話：02-3366-7970#214

電子信箱：yiling0721@ntu.edu.tw

受文者：國立聯合大學

發文日期：中華民國114年3月17日

發文字號：校雙語字第1140020206號

速別：普通件

密等及解密條件或保密期限：

附件：2025議程、海報(attch1 219099372f39debefb778ac458005ffb_1140020206-0-0.pdf、
attch2 219099372f39debefb778ac458005ffb_1140020206-0-1.jpg)

主旨：本校雙語教育中心辦理「2025 EMI Horizons:

Opportunities and Challenges Ahead」論壇，自即日起開放
報名，敬邀貴校教師、職員及學生報名參加，請查照。

說明：

一、旨揭論壇主要將探討推動「高教EMI」的願景與實踐，邀
請國內大專校院、國際學者等從學術視角與實務經驗進
行交流與對話，共同探究未來的挑戰與契機。

二、論壇資訊：

(一)日期：114年5月17日（星期六／整日）與至5月18日
（星期日／半日）。

(二)地點：本校博雅教學館103教室。

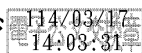
(三)報名日期：即日起至4月22日（星期二）或額滿為止，
採個人線上報名，人數上限250人。

(四)報名網址：<https://www.surveycake.com/s/R6x9Z>。

(五)檢附議程及海報各1份。

正本：全國大專院校

副本：雙語教育中心



校長 陳文章

裝

訂



線



2025 臺灣高教雙語教育論壇 EMI Horizons: Opportunities and Challenges Ahead

Time: 2025.05.17-18 (SAT-SUN)

Venue: Roya Lecture Building, National Taiwan University (國立臺灣大學博雅教學館)

Day 1 (5.17_SAT)

Time	Program		
09:30	Registration		
10:00-10:20	Opening remarks	Po-Chiao LIN (林伯樵), Chief Secretary, MOE	10min
		Wen-Chang CHAN (陳文章), President, NTU	10min
10:20-12:30	Moderator	Hsiao-Wei YUAN (袁孝維), VP for International Affairs, NTU	
	Keynote Speaker	<i>Global Talent Preparation in Higher Education (暫定)</i> Huey-Jen SU (蘇慧貞), Former President, NCKU	30min
	Keynote Speaker	<i>NTU Talent Cultivation and Bilingual Education</i> Shih-Torng DING (丁詩同), Executive Vice President, NTU	30min
	Break		10min
	Keynote Speaker	<i>EMI in Action: Fulbright Perspectives</i> Randall L. NADEAU (那原道), Executive Director, Fulbright Taiwan	30min
	Panel Discussion	Moderator VP YUAN Panelist President SU, EVP DING, Executive Director NADEAU	30min
12:30-14:00	Lunch break/ Poster Session (NCCU, NCKU, NTHU, NTNU, NTU, NTUST)		
14:00-15:30	Concurrent Sessions	Quality Assurance in EMI Moderator Shan-Yun HUANG (黃山耘), NTU Speaker Yeu-Ting LIU (劉宇挺), NTNU May-Ru CHEN (陳美如) & Peng-Jie WONG (翁鵬聚), NSYSU Mary GOODRICH (谷梅里) & Yi-Ju LAI (賴怡如), Fulbright NTU	90min
		For Better ESAP: Assessment, Teaching, Research Moderator Chen-Hsiu KUO (郭貞秀), NTU Speaker Chen-Hsiu KUO (郭貞秀), NTU Ting FANG (方挺) & Chia-Cheng CHIEN (簡嘉呈), NTUST Joyce S. CHIN (金韶), LTTC	
15:30	Break		
15:50-17:20	Concurrent Sessions	EMI-Teaching Assistant Training Design Moderator Chenhao CHIU (邱振豪), NTU Speaker Sonya Ya-Chu FAN (范雅筑), NTNU 臺灣大學代表 (待更新)	90min
		Sim Classroom: Pedagogical Strategy Workshop (Maximum participants *20)	(45min)
17:20	Wrap-up		

Day 2 (5.18_SUN)

Time	Program		
09:00	Registration		
09:20-09:50	Special Session	<i>EMI Development: Issues and Solutions</i> Fulbright, Taiwan	30min
09:50-10:50	EMI Practice: Case Sharing		60min
	Moderator	Hsiao-Wei YUAN (袁孝維) Vice President for International Affairs, NTU	
	Speaker	Angela FRATTAROLA Director, Language and Communication Center, NTU-SG	
	Speaker	Eiji NAWATA Director, ASEAN Center, KU	
	Speaker	Natalie KONOMI Vice President for International Affairs and Diversity, KYUDAI	
10:50	Break		10min
11:00-12:30	EMI Practice and Benchmarking		90min
	Moderator	Shih-Torng DING (丁詩同) Executive Vice President, NTU	
	Speaker	Byungmin LEE Professor, Department of English Language Education, SNU	
	Speaker	Yvonne FOLEY Senior Lecturer, Moray House School of Education and Sport, UoE	
		Tracy COSTLEY Senior Lecturer, Department of Language and Linguistics, Essex	
12:30-12:50	Roundtable	Moderator EVP DING Panelist (in surname alphabetical order) Senior Lecture FOLEY Professor LEE Meihui LIU (劉美慧) , VP for Academic Affairs, NTNU Shu-chen OU (歐淑珍) , VP for Academic Affairs, NSYSU Wen-Li TSOU (鄒文莉) , Director, EMI PD Center, NCKU	20min
		Hung-Jen WANG (王泓仁) Vice President for Academic Affairs, NTU	

Abbreviation | (alphabetical order)

EMI	English as a Medium of Instruction
ESAP	English for Specific Academic Purposes
Essex	University of Essex
KU	Kyoto University
KYUDAI	Kyushu University
LTTC	The Language Training & Testing Center
MOE	Ministry of Education, Taiwan
NCCU	National Chengchi University
NCKU	National Cheng Kung University
NSYSU	National Sun Yat-Sen University
NTHU	National Tsing Hua University
NTNU	National Taiwan Normal University
NTU	National Taiwan University
NTUST	National Taiwan University of Science and Technology
NTU-SG	Nanyang Technological University
SNU	Seoul National University
UoE	University of Edinburgh



2025 臺灣高教雙語教育論壇

EMI Horizons

Opportunities and Challenges Ahead



Date
5/17-18

Venue
Boya Lecture Building
博雅教學館

219099372f39debefb778ac458005ffb_1140020206-0-1.jpg

協辦單位

主辦單位



臺灣大學
雙語教育中心
2021.07.15